



WILKINSBURG STAMP CLUB NEWS

Volume 17 Issue 6
January 2018



Philately - is the study of stamps and postal history and other related items.

It also refers to the collecting, research, and enjoyment, of stamps and other philatelic products.

Contact Information;
Please update your email address so we can notify you quickly with any urgent matters.

Wilkinsburg Stamp Club is a member of APS #12293

USPS Sneak Peek at 2018



- Love Flourishes (Love series)** - a garden of flowers surrounding the word "Love."
- Year of the Dog (Celebrating Lunar New Year series)**- The Year of the Dog Feb. 16, 2018, and ends Feb. 4, 2019.
- Lena Horne (Black Heritage series)**-The 41st in the Black Heritage series honors Lena Horne (1917–2010)
- U.S. Flag**-the American flag in vivid red, white and blue.
- Bioluminescent Life**-This celebrates the phenomenon of bioluminescence
- Illinois Statehood (Statehood series)**-celebrates the 200th anniversary of Illinois statehood.
- Mister Rogers**-Fred Rogers

- (1928–2003) was known as a beloved television neighbor to generations of children.
- STEM Education**- celebrates the role of science, technology, engineering and mathematics (STEM)
- Peace Rose**-revolutionized hybrid tea roses with its unique coloring, hardiness, and disease resistance.
- Sally Ride**-America's first woman in space, Sally Ride (1951–2012)
- Flag Act of 1818**- the 200th anniversary of the Flag
- Frozen Treats**- frosty, icy pops on a stick.
- O Beautiful**-the beauty and majesty of the United States through
- World War I** - pays tribute to the sacrifice of American soldiers and millions of supporters on the home front.
- Dragons**- celebrates dragons, the high-flying, fire-breathing mythological creatures.
- Birds in Winter**-Birds in

- Winter celebrates four of winter's winged beauties
 - John Lennon (Music Icons series)**-honors singer and songwriter John Lennon (1940–1980)
 - The Art of Magic**-celebrates the art of magic with this pane of 20 stamps illustrating five classic tricks magicians use to amaze and delight audiences
 - Byodo-In Temple (Priority Mail)**-the Byodo-In Temple, in Hawai'i.
 - Sleeping Bear Dunes (Priority Mail Express)**-celebrates the Sleeping Bear Dunes in Michigan
 - Meyer Lemons**- Lemon sliced is a 2-cent definitive
- All stamp designs are preliminary*
- https://about.usps.com/news/national-releases/2017/pr17_079.htm

Inside this issue:

Annual Holiday Party & Club News	2
Upcoming Shows	3
Linn's 2017 US popularity poll	3
Junior Corner – Stamp Catalogs	4
50 Years Ago	4

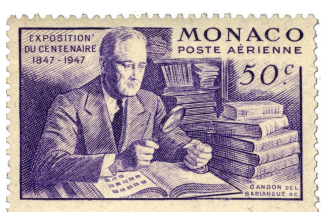
Notable People on Stamps:



In celebration of the 100th Anniversary Birth Franklin D. Roosevelt Cook Islands issued Air post stamps depicting FDR with his stamp collection. Released September 30, 1982 at a Value of 60 c - Cook Islands cent.

Franklin D. Roosevelt (1882 - 1945), 32nd president of the United States, served an unprecedented four terms. As a child, he looked to stamps for knowledge about the world. As a polio-stricken adult, they offered solace. Throughout his entire life, including his presidency, he spent time each day with his collection. During the 1930s, he and Postmaster General James A. Farley brainstormed over designs, colors, and themes for stamps. Roosevelt actually sketched numerous ideas for stamps.

The time each day spent with his stamps relaxed President Roosevelt during those very tense times. He claimed, "I owe my life to my hobbies – especially stamp collecting."



design error - his hand at the right has 5 fingers plus a thumb

December Holiday Party & Club News

The Annual Holiday Party was held Sunday December 10th at the Churchill Borough Building.

A total of 24 people attended, 17 members and 7 guests. Good food and fellowship was enjoyed by all.

Thanks to all that brought in food and drink.

Keeping with tradition, and in memory of Tom Reiff, Deb had a multiple choice philatelic trivia contest, and the winner was... Herb Mendelsohn.

Congratulations Herb, for getting 17 out of the possible 20 answers correct. Herb won a \$15 gift card to Eat n Park donated by Laura Kaczynski, Thank you Laura for your prize donation.

A Total of six packages were raffled in the Chinese Auction, Thanks to Danielle Weaver, Marty Cooper, and Con & Deb Foltyn for their donations.

Circuit books were available for the membership to peruse.



Photos courtesy of Laura Kaczynski, and Deb Foltyn

Upcoming Elections
Club is now accepting applications for the positions of Recording Secretary and President, these are two year terms.

If you are interested in either of these posts make it known at a meeting,...

Election to be held at the meeting in February. Installation will be in June 2018



Hard at work answering those trivia questions



AND.... Lots of Sweets to finish the meal.



Chinese Auction Table

Upcoming Shows**January 28th, 2018**

Tri-State Monthly Coin & Stamp Show
 Sheraton Bucks County
 400 Oxford Valley
 Langhorne, PA 19047
 Contact: Allen Brock
 Phone: 305-852-7678
 Hours: Sun 10-4
 Admission: Free

WSC Meetings

Visitors are welcome!
 Next meetings are January 14th & 28th. We meet on the 2nd & 4th Sunday (no holidays), except summer months of May, June, July and August when we meet once a month, on the 2nd Sunday. Doors open at 12:30 P.M. until ?, with the business meeting at 2 P.M. at the Churchill Borough Building, 2300 William Penn Hwy Churchill, PA 15235.
Free light lunch available

DUES ARE ONLY \$8.00 PER FISCAL YEAR (JULY-JUNE)

Members if you haven't paid your dues yet you can send payment made out to the Wilkinsburg Stamp Club and sent to:

*Wilkinsburg Stamp Club
 P.O. Box 10552
 Pittsburgh, PA 15235-0552*

Officers**President:**

Andy Novotny
 novoand@hotmail.com

Vice-President:

Laura Kaczynski
 laurakac13@verizon.net

Recording Secretary:

Lorraine Vincent
 LVincent04@aol.com

Treasurer:

Danielle Weaver
 dmm742000@yahoo.com

Newsletter Editor:

Deb Foltyn
 quest4moos@msn.com

Mailing Coordinator:

Danielle Weaver
 dmm742000@yahoo.com

Web Tech:

Deb Foltyn
 Quest4moos@msn.com

WSC Newsletter

It's your newsletter!

Help Make it special

Original articles for the newsletter may be submitted by any of the membership to Deb Foltyn at a meeting or emailed to

Quest4moos@msn.com

Snail mail:

Deb Foltyn

1023 Brintell Street

Pittsburgh, PA15201-1637

Ideas or content suggestions are welcome.

Note articles submitted may be edited for content or to fit the Format.*

Club members get a free hard copy of the newsletter.

LINN'S 2017 U.S. Stamp Popularity Poll Now Open On-line

Online voting in *Linn's* 2017 U.S. Stamp Popularity Poll began Dec. 5. You can find the link here;
<http://www1.linns.com/poll/>

In addition a ballot will be published in each *Linn's* issue until voting ends March 1, 2018.

Current leaders are available online.

Ballot includes best design, worst design, most important, and least necessary in three categories, and overall favorite.

Categories include;

1) COMMEMORATIVES

Andrew Wyeth, Walt Disney Villains, Dorothy Height, Father Ted Hesburgh, Henry David Thoreau, History of

Hockey, John F. Kennedy, Mississippi Statehood, National Museum of African American History and Culture, Nebraska Statehood, Oscar de la Renta, Protect Pollinators, Sharks, Sports Balls, Total Solar Eclipse, WPA Posters, Year of the Rooster

2) DEFINITIVES

Alzheimer's, Boutonniere, Christmas Carols, Corsage, Delizioso, Flowers from the Garden, Gateway Arch, Green Succulent,

Liliuokalani Gardens, Love Skywriting, Robert Panara, Seashells, Strawberries, The Snowy Day, U.S. Flag, Uncle Sam's Hat, USA Star

3) POSTAL STATIONERY

Azulillo Chilean Blue Crocus

forever postal card and double reply postal card, Barn Swallow forever stamped envelope, Liliuokalani Gardens Priority Mail stamped envelope, Northern Cardinal forever stamped envelope

4) OVERALL FAVORITE

Choice is one of the above.

The Slobbo Gazette

Postmaster Dingleberry has declared that there will be a new Wilkinsburg Stamp Club Satirical Souvenir Sheet of 2018. The Shark will be , since it was responsible for their world changing climate. The post office is increasing the price of postage, so the Sheets will be issued at a cost of one thousand and one robonik each, (US equivalent of \$.75 each). Available April 14th-15th at WILKPEX or via snail mail

In the meantime all countrymen are encouraged to plant their snowflakes with the hopes of growing some great trees to be harvested in the fall, to build much needed winter shelters for homeless...

Junior Corner – Stamp Catalog / Catalogue

Types/Classifications of Philately

“Hey, hand me that Gismo”

- Ok so you don't really know what Pap is talking about but you hand him something from the general direction of his point...for the next few months we will cover those Gismos...

The Tools of the Philatelists or Stamp Collector;

This month we will discuss **Stamp Catalog:**

Stamp Catalogs are a vital tool for valuing and identifying stamps. A variety of stamp catalogs are available. They are very helpful, and can be borrowed from some libraries. A stamp catalog is a great reference book filled with illustrations that can help us identify and learn about our stamps.

They provide us with such information as, the date when

the stamp was issued, a description of the stamp, why it was issued, how it was printed, and gives the value of the stamps in used and unused-condition. Scott catalogs, the H.E. Harris BNA stamp catalog and the Brookman stamp price guide catalog provide current market values of stamps and are essential for correct identification of stamps when buying, selling, or trading. The Scott Stamp Catalog lists stamps from every country with useful information, including the issue date, the process used to print the stamp, the perforation, and a unique Scott catalogue number.

Traditional philately -study the parts of the postage stamp, analyzing watermarks, how stamps are printed and other technical aspects.

Topical philately -Stamps of favorite subjects or theme: flowers, animals, cars, and many others.

Postal history -how stamps were used on mail, postal history documents, .

Postal stationery - envelopes, post cards, with an embossed or pre-printed stamp.

Stamp forgery - stamp forgeries and philatelic counterfeits.

Revenue /Cinderellas -labels, telegraph and fiscal stamps, etc. Cinderellas are not valid postage.

Aerophilately - airmail stamps, labels, documents, post cards, and letters moved by flying couriers.

Astrophilately The chronicle of man's space conquests with postal stationery and cards. Also space flown mail and covers.

Postcards/ Maximaphily postcards with stamps and cancels that match the design are called maximum cards.

Philatelic Literature The study of stamps and books, magazines, and other forms of philatelic literature are officially recognized as a legitimate branch in philately.

Philately for the youth cartoon and comic characters that can encourage kids to begin stamp collecting.

11 classes of philately - the Federacion Internationale de Philatelie

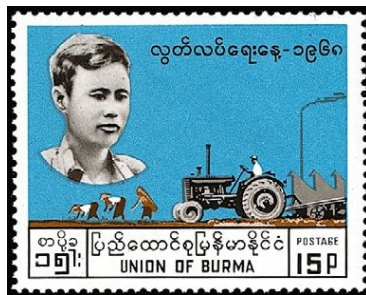
WE'RE ON THE WEB!
Wilksburgstampclub.com

WILKSBURG STAMP CLUB
Home of the Famous Satirical Souvenir

50 Years ago - January 1968



Madagascar
Coats of Arms
 Issued on: 01-22-1968
 Commemorative
 Perforation: 13
 Offset lithography
 Value: 90 Fmg (Malagasy franc)



Myanmar (Burma)
20th Anniversary of Independence
 Issued on: 01-04-1968
 Commemorative
 Perforation: comb 13 x 13½
 Offset lithography
 Value: 15 Myanma pya



Austria
Buildings
 Issued on: 01-22-1968
 Definitive
 Perforation: 13¾
 Offset lithography
 Value: 2 öS (Austrian schilling)



Senegal
International Year of Human Rights
 Issued on: 1968-01-20
 Commemorative
 Perforation: comb 13 x 12½
 Photogravure
 Value: 30 CFA (West African CFA franc)